



 **MPY** TOKEN

ABOUT US

Welcome to Life Miner, a company that is changing the way bitcoin mining is done worldwide. Based in Paraguay, our goal is to become a global hub for transaction validation on the blockchain network through the process of tokenization.

Our mining data centers are developed with the highest level of security and energy efficiency to maximize the potential of block validation on the Bitcoin blockchain and minimize energy costs.

We use state-of-the-art mining equipment and high-quality facilities, and we are ready to face the challenges of the Bitcoin mining market and provide our customers and partners with a new framework for digital asset management in the crypto market.



FOUNDERS

CORPORATE MANAGEMENT

Since 2016, we have been crypto market enthusiasts and have been active in the bitcoin mining industry. We have expertise in building containers with a honeycomb refrigeration system, taking advantage of the surplus electricity generated by Itaipu and other hydroelectric plants in the region. With cutting-edge technology and a strategic location, our great advantage drives us to be at the forefront of bitcoin mining. We are committed to providing a transparent, trustworthy and innovative experience for our community.

 **Jairo Bonicontro**
CEO (Chief Executive Officer)

 **Paula Giudice**
COO (Chief Operating Officer)



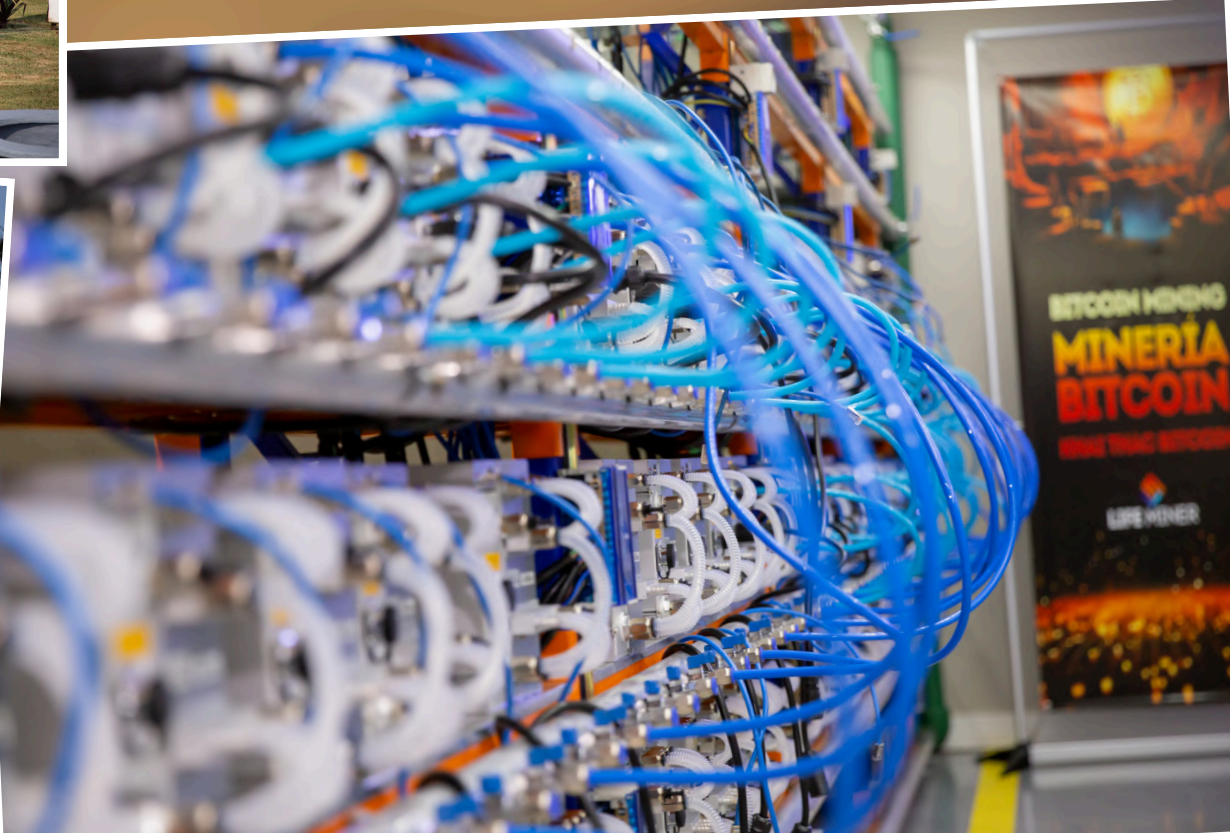
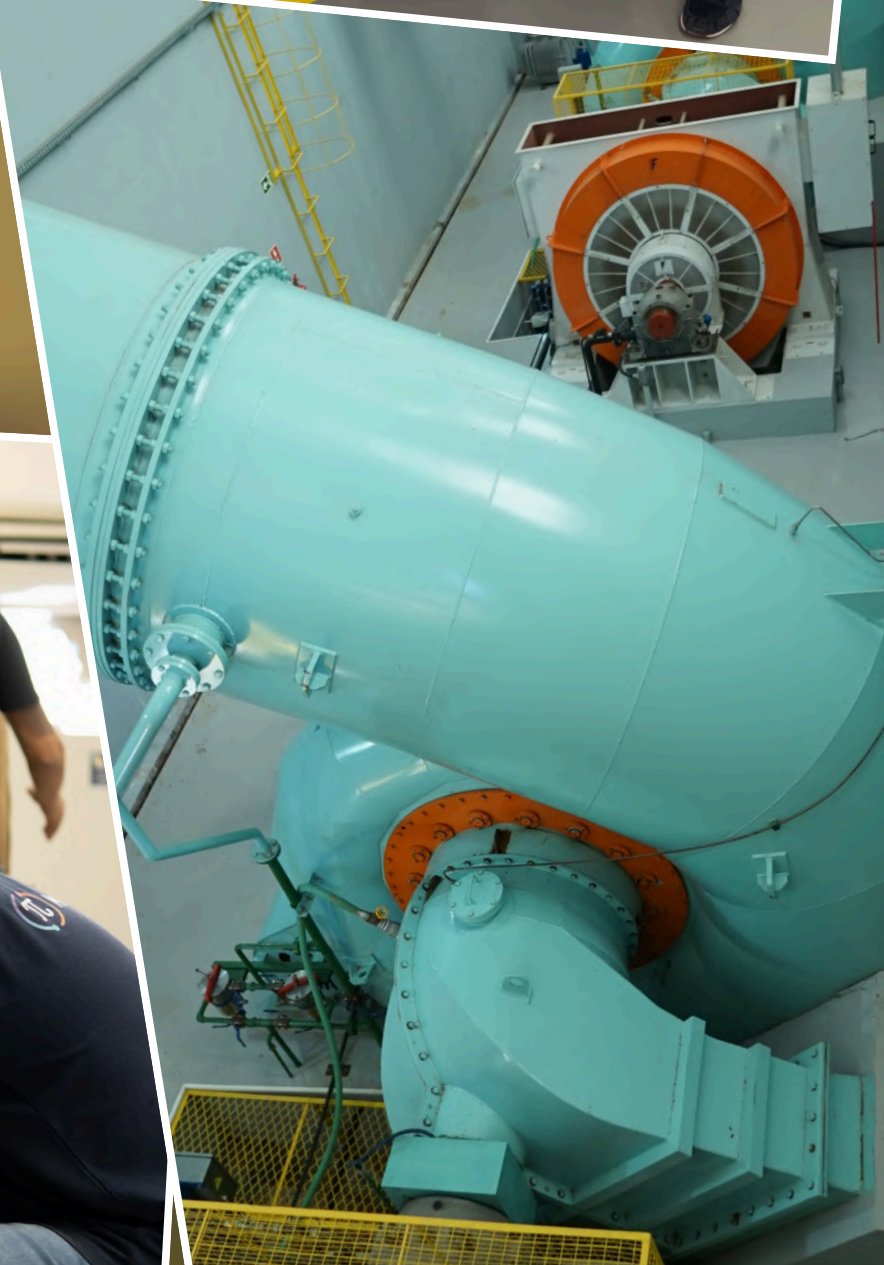


**WHERE
IT ALL
STARTED!**





MINING FARM







GLOBAL CONVENTION EUROPE 2024



MPY CONCEPT

The MPY Token is a utility token that digitally represents the tokenization of the Life Miner ecosystem, being an integral part of the project's valuation. In addition to participating in the asset's appreciation, MPY Token holders have the right to vote on strategic decisions, such as protocol updates and ecosystem improvements.

Each token reflects a fraction of the project's total value, allowing investors to track and benefit from Life Miner's continued growth and development.



MPY TOKEN

TOTAL SUPPLY:

21,000,000 MPY TOKENS

Initial token price (ICO): \$0.20

- TOKEN PRICE
- AMOUNT OF TOKENS SOLD

The appreciation of MPY Token will occur after the token reaches sales quantities established in this graph.

Example:

When 2 million tokens are sold, the price will increase to \$0.25 (25 cents), and so on until it reaches the value of \$1.00 (1 dollar), to later be launched on global exchanges DEX and CEX.



LICENSE MPY

By acquiring MPY licenses, you will participate in a rewards pool with returns of up to 0.5% daily, until reaching the maximum limit of 200% in earnings.

Minimum License: \$100.00

UP TO
0.5%
per day

All Licenses MPY generate residual earnings in the Rewards Program.

mpytoken.com



BURNING MPY

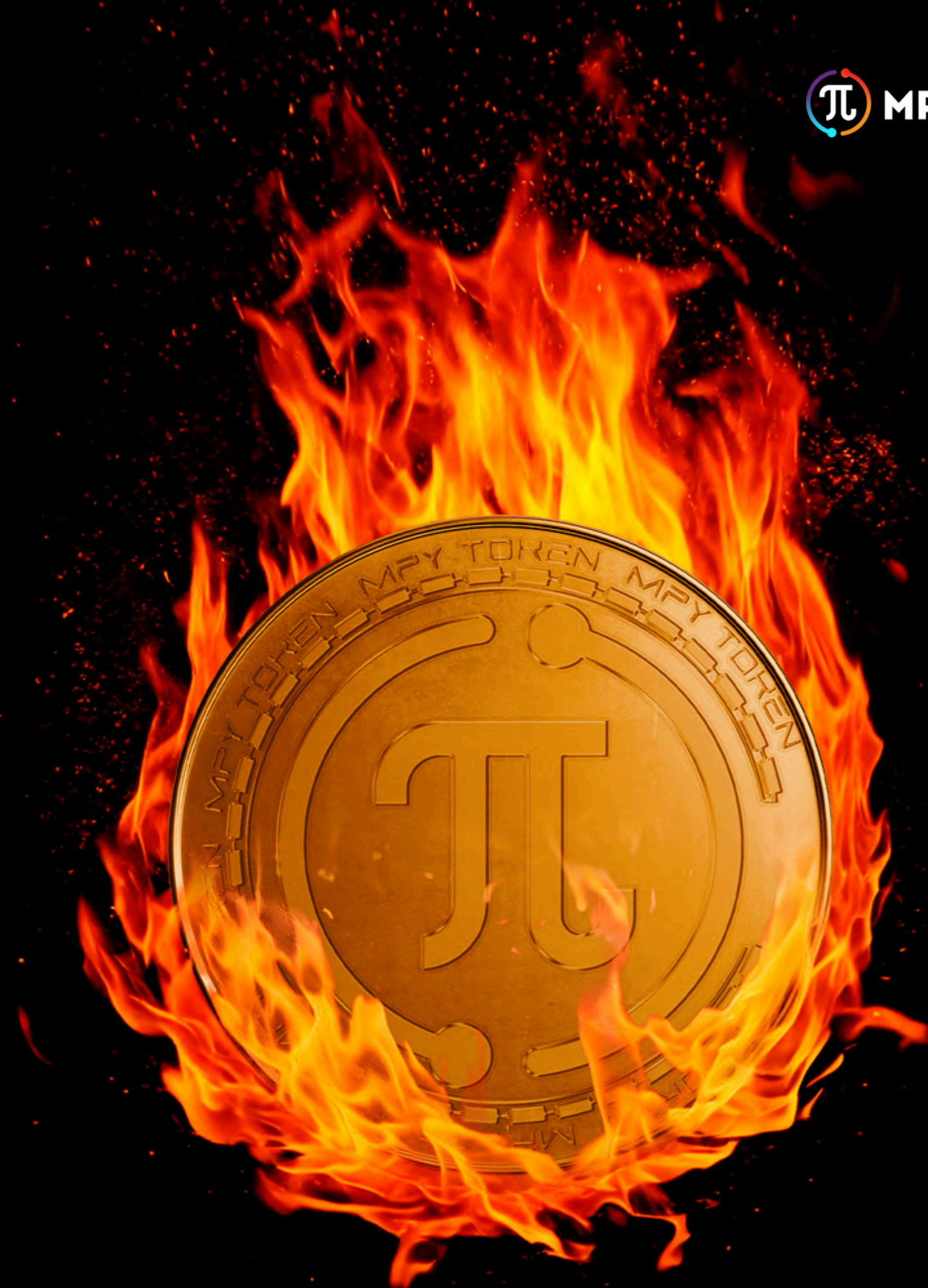
When purchasing MPY tokens and burning them in the swap process for MPY Licenses, all MPY will be automatically burned and converted into USDT.

This means that MPY tokens will be sent to a “dead wallet”, immediately reducing the total supply and accelerating the appreciation process.



****Access the MPY Token Burn Link
on the BNB Chain Blockchain:***

[MPY BURN LINK](#)



LICENSES MPY

All MPY Licenses are available in multiples of \$100, allowing the user to accumulate up to \$100,000 in MPY Licenses in their account.

LICENSE 1	LICENSE 2	LICENSE 3	LICENSE 4	LICENSE 5
				
\$100	\$200	\$1,000	\$2,000	\$4,000
4% Binary 2 Residual Level 200% Cap	6% Binary 3 Residual Level 200% Cap	8% Binary 4 Residual Level *300% Cap	10% Binary 5 Residual Level 300% Cap	10% Binary 6 Residual Level 300% Cap

All MPY Licenses provide daily performance, accumulating rewards up to a 200% limit. Additionally, rewards accumulated through the Rewards Program also contribute toward reaching this 200% cap.

UPGRADE is calculated based on the total of MPY Licenses, resulting in an increase in the binary percentage. Starting with the \$1,000 license, the user unlocks a 300% earnings cap, which includes network earnings commissions in addition to the initial 200%. This means returns are generated until the 200% limit is reached; after that, only network earnings continue to accumulate until the total 300% cap is achieved.

DIRECT SALE

Earn 8% commission on direct sales of Licenses MPY through your referral link.

YOU



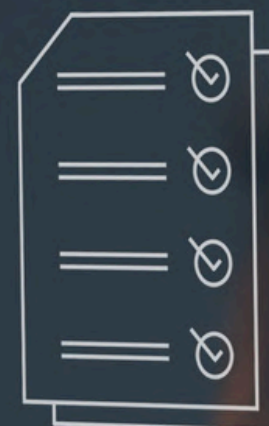
8%

\$1,000



In this example you earned 8% of \$1,000

\$80



TEAM BONUS

Earn up to 10% binary on your smaller team's sales volume matching.

Maximum binary winning ceiling: \$4,000
Sustainability lock for the global daily binary: 40%.



In this example, it generated a 10% gain in Binary about daily sales volume in the smaller team:
= \$1,000

\$40 accounts do not generate income, but accumulate points and qualify the account for the binary system.

RESIDUAL BONUS

24%

Earn 2% on users' daily earnings with ongoing License MPY up to the sixth level of depth, according to the total sum of active License MPY.

You must have a minimum active License MPY of \$100 to be eligible to receive this bonus.

LICENSE OWN	\$ 100	\$ 200	\$ 1,000	\$ 2,000	\$ 4,000
LEVEL 1 and 2	5%	5%	5%	2%	2%

CAREER PLAN

The sales volume necessary to reach the levels in the Career Plan is calculated based on the points accumulated in the volume on the lower side of the binary, with this score always being cumulative.

From the GOLD level onwards, another prerequisite is to have direct or indirect qualifications relating to the previous level on both sides of the binary, as shown in the diagram alongside.

Does not count spill points as a prerequisite for sales volume.



WITHDRAWALS RULES

Reward Withdrawals:

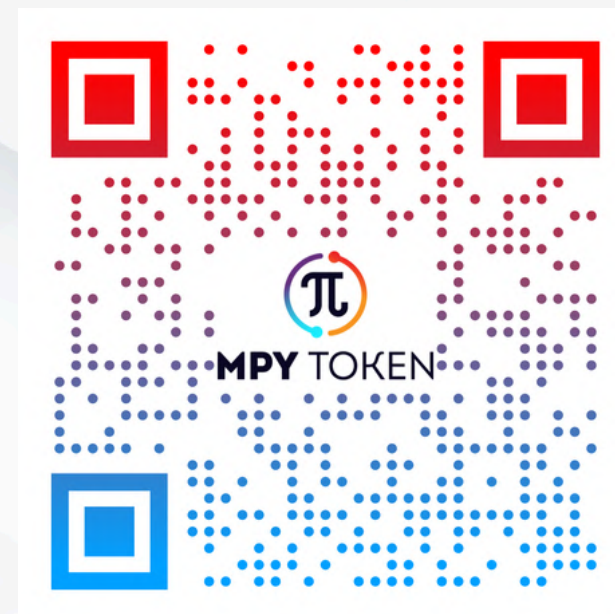
- Daily withdrawals from \$30.00
- Receipts in USDT BEP20
- 2% Withdrawal fee
- Reception period of up to 48 hours from the request.
- Minimum value of \$100.00 License MPY

Follow-us

Visit our official website for more detailed information!
Scan the QR CODE!

Please read the **Terms and Conditions** carefully when digitally accepting the registration on the **mpytoken.io** account.

SOCIAL MEDIA



***Disclaimer:** The content of this presentation is provided for informational purposes only, without guarantees of financial return or investment advice. MPY Token is a volatile cryptographic asset and any investment carries risks. Past performance does not guarantee future results and it is recommended that you consult financial professionals before making investment decisions.*

Transactions involving cryptographic assets may be subject to local regulations and it is the user's responsibility to ensure legal compliance. The MPY Token team is not responsible for any financial loss or damage arising from the use, purchase or sale of the token.

